

为确保海上航行及货物运输安全，即日起，我司将对货主自备箱(SOC 箱)的订舱做如下规范：

- A close-up photograph of a black metal container, likely a shipping container, featuring a large white label and a prominent 'APPROVAL' stamp. The stamp is in large, bold, black capital letters. Below the stamp, there are several rows of white text on a black background, including '365/92', '1992', and a date '2009/2011/2011/2012/2013'. To the right of the stamp, there is a white rectangular label with a black border. This label contains a vertical list of months from 'JAN' to 'DEC', each next to a small black circle. A horizontal line separates the months from the text 'REINSPECT BEFORE DATE' and 'PUNCHED'. Below this, the date '2009/2011/2011/2012/2013' is printed, followed by a small black circle and the year '2015/2016'. At the bottom of the label, the text 'CSC' is visible. The container itself has a yellow-painted top edge and a silver-colored metal ring at the top right corner.

- [illegible]

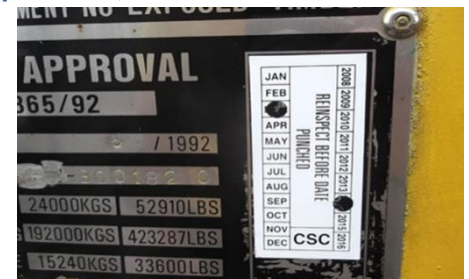
Definition		
Yes	=	Prohibited
Blank	=	Not prohibited
*	=	Refer to Remark
Remarks		
ONE's AKKU		
ONE booking = Prohibited		
Partner booking on ONE vessels = No restriction		

- SOC 箱拆空后禁止还至 ONE 的空箱场站，若因此产生任何仓储费、堆存费、管理费等，一律由客户自行承担；
 - 货主自备的加热罐装箱，若控制面板位于 SOC 箱侧面，导致船员无法靠近监测，则一律禁止装船。
 - 在 OOCL 船上，一律不接受任何往来于中国与巴基斯坦之间的进出口 SOC 箱的订舱。
- 以上请务必严格执行。对您的业务带来不便，敬请谅解。

In order to ensure the safety of maritime navigation and cargo transportation, ONE will make the following specifications/prohibition for the booking of SOC:

- SOC without valid CSC is prohibited.
 - Letter of Indemnity is requested to non-standard SOC booking together with specifications.
 - Only CSC is in need,
 - Request shippers to specify if SOC is second-hand boxes or

not,



- ACEP on CSC plate is No Longer valid, request customers to arrange CSC periodical inspection and update CSC plate, otherwise turn down the shipment, illustrated per the below,
- The below SOC acknowledgement is for your sharing Maintenance and Examination.

When the container is sold, it is the responsibility of the buyer to maintain the container in line with their own container maintenance and inspection programmer. All responsibility for the safe condition of the container passes from the seller to the buyer irrespective of the condition of the container. Once the title of the container has passed to the buyer and the buyer wishes to use the container for international - 29 - transport the buyer must ensure compliance with the CSC.

1 If the buyer has an approved ACEP the container should be marked accordingly with the buyer's ACEP reference number.

2 If the buyer does not operate an approved ACEP, then the container must be marked with a Next Examination Date (NED) as required under the Periodic Examination Scheme. The date of the next examination should reflect the condition of the container and it is the responsibility of the competent person where the container is sold to identify a next examination date that reflects the condition. Typically, the competent person can issue a NED up to a maximum of 30 months ahead, or one that permits the container to be moved one way to its new destination, often three or six months.

By so marking the containers, the owner is indicating that it is, and will be, examined and maintained in compliance with CSC to maintain a high level of safety of human life in the handling, stacking and transportation of containers.

2. Below is the updated SOC prefix prohibition list for your easy reference. The highlighted part in red is prohibited SOC Prefixes by ONE; these prefixes should be rejected by ONE Booking even though the said prefix is accepted by the Partner onto their vessels. For the prohibited SOC prefix other than ONE's, we will accept the booking based on partners' requirement.

Last update 6th Mar 2024																			
Prefix / Carrier	ONE	YML	HLC	HMM	MSC	WHL	ACL	PIL	MSK	CNC	TSL	SSL	IAL	COS	OOCL	STRAITS ORIENT LINES	EMC	UF	RCL
AGIU	Yes	Yes	Yes	Yes	Yes	Yes	Yes		Yes						Yes		Yes	Yes	Yes
AKKU	*					Yes									Yes		Yes		Yes
ALXU	Yes	Yes	Yes	Yes	Yes	Yes	Yes	Yes	Yes		Yes	Yes	Yes	Yes	Yes	Yes	Yes	Yes	Yes
BANU	Yes	Yes	Yes	Yes	Yes	Yes	Yes	Yes	Yes	Yes	Yes	Yes	Yes	Yes	Yes	Yes	Yes	Yes	Yes
BGCU					Yes	Yes									Yes		Yes		Yes
CILU						Yes									Yes		Yes		Yes
DAMU						Yes									Yes		Yes		Yes
FMCU	Yes	Yes	Yes	Yes	Yes	Yes	Yes								Yes		Yes	Yes	Yes
FURU	Yes	Yes	Yes	Yes	Yes	Yes	Yes	Yes	Yes	Yes	Yes	Yes	Yes	Yes	Yes	Yes	Yes	Yes	Yes
HDXU	Yes	Yes	Yes	Yes	Yes	Yes	Yes	Yes	Yes	Yes	Yes	Yes	Yes	Yes	Yes	Yes	Yes	Yes	Yes
IRSU	Yes	Yes	Yes	Yes	Yes	Yes	Yes	Yes	Yes	Yes	Yes	Yes	Yes	Yes	Yes	Yes	Yes	Yes	Yes
KGNU	Yes	Yes	Yes	Yes	Yes	Yes	Yes		Yes						Yes		Yes	Yes	Yes
LCTU				Yes	Yes	Yes			Yes						Yes		Yes		Yes
LSLU						Yes									Yes		Yes		Yes
MIOU																			Yes
PARU		Yes	Yes	Yes	Yes	Yes			Yes						Yes		Yes		Yes
PESU	Yes	Yes	Yes	Yes	Yes	Yes	Yes		Yes						Yes		Yes	Yes	Yes
PICU																			Yes
RSPU						Yes									Yes		Yes		Yes
SBAU	Yes	Yes	Yes	Yes	Yes	Yes	Yes	Yes	Yes		Yes	Yes	Yes	Yes	Yes	Yes	Yes	Yes	Yes
TDIU	Yes	Yes	Yes	Yes	Yes	Yes	Yes	Yes	Yes	Yes	Yes	Yes	Yes	Yes	Yes	Yes	Yes	Yes	Yes
WOSU						Yes									Yes		Yes		Yes
XANU	Yes	Yes	Yes	Yes	Yes	Yes	Yes		Yes						Yes		Yes	Yes	Yes
XBIU	Yes	Yes	Yes	Yes	Yes	Yes	Yes	Yes	Yes			Yes	Yes	Yes	Yes	Yes	Yes	Yes	Yes
XNIU					Yes	Yes							Yes	Yes	Yes		Yes		Yes
ZCLU																			Yes
ZCSU																			Yes
ZIMU																			Yes
ZMOU																			Yes
ZWUFU																			Yes

Definition

Yes	=	Prohibited
Blank	=	Not prohibited
*	=	Refer to Remark

Remarks

ONE's AKKU

ONE booking = Prohibited

Partner booking on ONE vessels = No restriction

3. Returning SOC to ONE facility is prohibited. Any costs associated to the return of a delivered SOC into ONE's facility will be to the account of the cargo, including by not limited to transloads、drayage、storage etc.
4. SOC Heating Tank with control panel located at the slides of the containers and is not accessible by crew for monitoring when loaded on board, is prohibited.
5. It is not accepted any SOC bookings of import and/or export between China and Pakistan. Please strictly implement the above and sorry for any inconvenience caused.

顺祝

商祺！

海洋网联船务（中国）有限公司

2024 年 03 月 19 日